

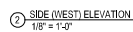
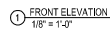






ELEVATION KEYNOTE LEGEND		
#	SYMBOL	DESCRIPTION
E01		STUCCO
E1		POST OFFICE ENTRANCE 1
E2		POST OFFICE ENTRANCE 2
E3		MAILBOX ENTRANCE
E4		SECONDARY ENTRANCE
E5		MAIL ENTRANCE
E6		FINES ROOM ENTRANCE
E7		POLICE STAIR
E8		RECREATION ROOM
E9		ADMIN EMPLOYEE ACCESS DOOR
E10		MAILBOX WALL, PAID TO DOOR 1
E11		MAILBOX WALL, PAID TO DOOR 2
E12		POST OFFICE SERVICE DOOR 1
E13		POST OFFICE SERVICE DOOR 2
E14		CORNER
E15		PIED-OUVER
E16		STONE FRONT
E17		CORNICE - WEST
E18		CORNICE - EAST
E19		CLAY SILL
E20		SKYLINE
E21		SHIPPL STUCCO
E22		STANDING SEASIDE ROOF
E23		STUCCO
E24		BEAM
E25		COLUMN & BASE
E26		PERGOLA

1. ELEVATION HEIGHTS ARE FOR REFERENCE ONLY. SEE SLODASHINGS FOR ACTUAL FLOOR HEIGHT ABOVE SEA LEVEL. CONTACT THE ARCHITECT FOR RECORD IF HEIGHTS DIFFER.
2. ALL VERTICAL ELEVATIONS ARE FROM THE FINISHED FLOOR UNLESS NOTED OTHERWISE.
3. NO SPACING IS INDICATED IN THE FOOTINGS. SPACINGS SHOWN FOR REFERENCE ONLY. ALL JOISTS MUST BE SPACED TO MATCH THE JOIST SPACING.
4. DO NOT TRANSFER PAINT COLORS ON AN EXTERIOR CORNER. ALL CORNER COLORS SHOULD BE SET AT INTERIOR CORNERS. UNLESS NOTED OTHERWISE, THE ARCHITECT'S A CONFIRMATION.
5. PAINT ALL EXPOSED EDGES OF TRIM, INCLUDING THE TOP AND BOTTOM EDGES.
6. ALL METAL PAINT TO BE ENAMEL BASE.
7. LOUVERS AND PANELS UNLESS SHOWN SHALL BE SPRAYPAINTED TO MATCH ADJACENT SURFACES INCLUDING FACTORY-PAINTED ITEMS. FRONTED SHUTTERS HOWEVER, BRUSH PAINTING OF THESE ITEMS WILL NOT BE PERMITTED.
8. THE GENERAL CONTRACTOR SHALL PAINT ALL EXPOSED PIPES, CONNECTIONS & JUNCTION JOINTS TO MATCH THE ADJACENT SURFACES.
9. THE GENERAL CONTRACTOR SHALL COORDINATE WITH FIRE DEPARTMENT AND LIFE SAFETY AGENCY PRIOR TO INSTALLATION.
10. THE GENERAL CONTRACTOR SHALL COORDINATE ALL WORK ON THIS SHEET WITH DEMOLITION, HVAC AND MECHANICAL, ELECTRICAL, PLUMBING, STRUCTURE AND FIRE PROTECTION DIVISIONS.
11. ALL PRE-PAINTED MATERIALS, TRIM, MOLINGS, CLADDING & CONNECTION SHALL BE FASTENED & ADHERED TO THE BUILDING MATERIALS ACCORDING SPECIFICATIONS TO THE FASTENING METHOD AND MEASURE EQUIPMENT OR STRUCTURAL DRAWINGS.
12. COORDINATE WITH ARCHITECT THE LOCATION OF ALL ADDITIONAL CONNECTIONS REQUIRED BUT NOT ON STRUCTURAL DRAWINGS.
13. ALL EXTERIOR SURFACES TO BE PAINTED BY THE OWNER OR PROVIDED WITH FACTORY OR SHOP APPLIED FINISH. ALL COLORS SHALL BE SELECTED BY ARCHITECT, APPROVED BY OWNER.



EXISTING TO REMAIN

NEW WORK

Sheet No.  
**A200**



